



Profile Manager – PC Suite Version 1.09 feature

Profile Manager

PC Suite is the Software interface for Jovy Systems Rework Stations. Profile Manager Feature included in PC Suite is managing tool for profiles saved into RE-8500 machine memory, where you can Edit, Organize, Delete profiles or Format the RE-8500 saved profiles.

This document is to explain this feature in details through the interface screen shoots.

- **Before you start**

The Profile Manager feature is not active as a protection from formatting the RE-8500 memory by error.





Profile Manager – PC Suite Version 1.09 feature

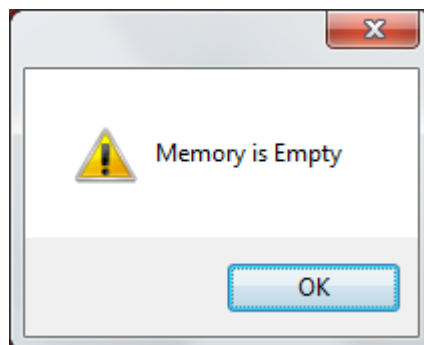
Activate the Password from RE-8500 Menu as follow:

RE-8500 Main Menu -> Settings -> 3-Activate Password -> Yes

Default password is 9999.



In case the Re-8500 Memory not contain any saved profiles ,an informative message will be displayed.

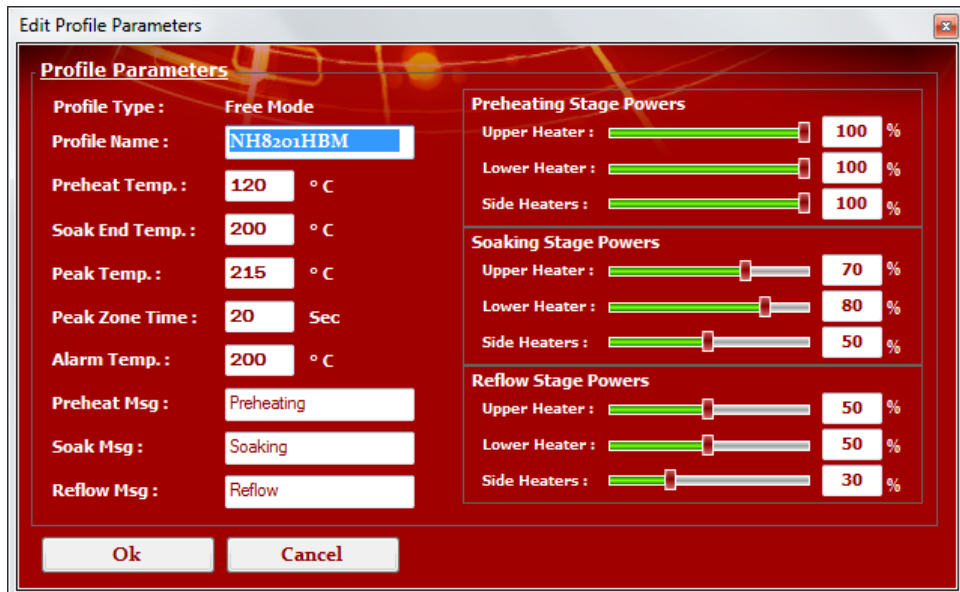




Profile Manager – PC Suite Version 1.09 feature

- **Profile Manager Options**

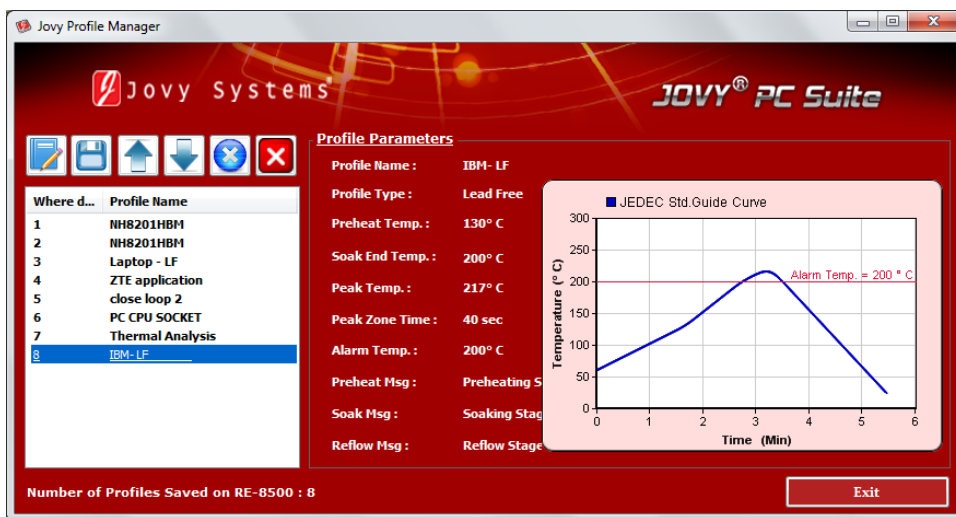
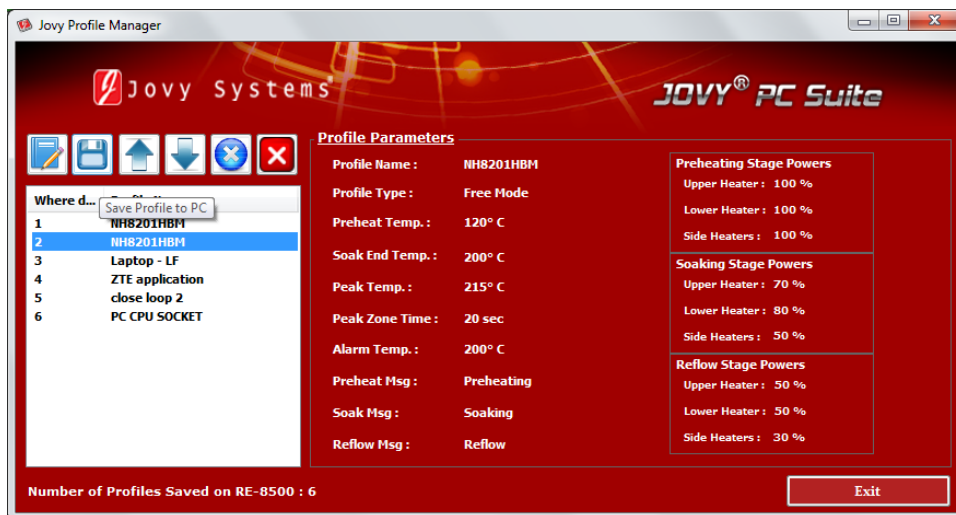
- Edit a profile saved into RE-8500 Memory: This option allows retrieving a specific profile and editing the settings, and then save again with new modifications in same location and number into RE-8500 Memory.





Profile Manager – PC Suite Version 1.09 feature

- Save a profile from RE-8500 Memory to PC: Review or Edit a profile then save it in your PC. It is recommended to create a folder named “RE-8500 profiles” to collect all profiles, as a backup or to be available to run. You can save unlimited profiles in your PC, but RE-8500 Memory capacity is 50 profiles.





Profile Manager – PC Suite Version 1.09 feature

- Arrange profiles: RE-8500 Memory allows saving 50 profiles (from 1 to 50), it could be re-arranged according to the priorities (frequently used profiles) by changing the location and profiles numbers.



Increment the profile number in case it is less priority.



Decrement the profile number in case it is higher priority



Profile Manager – PC Suite Version 1.09 feature

- Delete a profile: Delete a profile or more, to replace with another one or if it is un-wanted to be saved in RE-8500 Memory.



- Format RE-8500 Memory: Erase all profiles in one click

